



MICHIGAN STATE

UNIVERSITY

Fraternity and Sorority Life Resource Manual

Table of Contents

| | |
|---|----|
| Fraternity and Sorority Life Important Contacts | 4 |
| Organization/Chapter Contact Information | 5 |
| Letter from Fraternity and Sorority Director | 6 |
| Fraternity and Sorority Life Make Up | 9 |
| Fraternity and Sorority Life Office: | 9 |
| Fraternity and Sorority Life Executive Councils: | 10 |
| Fraternity and Sorority Life Chapters: | 12 |
| Fraternity and Sorority Life Members: | 12 |
| Fraternity and Sorority Life Staff Areas of Responsibility | 12 |
| Charge of the Fraternity and Sorority Staff: | 12 |
| Important Dates | 14 |
| Chapter Education Compliance Information | 15 |
| Membership Expectations | 16 |
| Michigan State University Policies | 16 |
| Fraternity and Sorority Life Operational Guidelines | 17 |
| Fraternity and Sorority Life Programming Fee | 18 |
| Payment | 19 |
| Grade and Photo Release | 20 |
| Anti-Hazing Agreement | 21 |
| Council and Chapter Leadership Information | 25 |
| Interfraternity Council Executive Board | 25 |
| Interfraternity Council Presidents | 25 |
| Multicultural Greek Council Executive Board | 26 |
| Multicultural Greek Council Presidents | 26 |
| National Pan-Hellenic Council Executive Board | 26 |
| National Pan-Hellenic Council Presidents | 27 |
| Panhellenic Council Executive Board | 27 |
| Panhellenic Council Presidents | 28 |
| Fraternity and Sorority Chapter Structure Information | 28 |
| Academic Break Procedure for Organization Structures | 29 |
| Roster Submission Instructions | 30 |
| Appendices | 31 |

Commonly Used Fraternity and Sorority Life Terms..... 31
Student Development and External Relations (SDER) Organizational Chart 34
Student Leadership and Engagement Organizational Chart..... 35

Fraternity and Sorority Life Important Contacts

ShirDonna Y. Lawrence, Ph.D.

Director of Fraternity and Sorority Life

Email: lawre396@msu.edu

Work: 517-884-4070

Cell: 517-515-3310

Elana Levy

Assistant Director of Fraternity and Sorority Life

Email: levyelan@msu.edu

Work: 517-432-3466

Hayley Jones

Coordinator of Fraternity and Sorority Life

Email: jonesh23@msu.edu

Work: 517-353-3998

Michigan State University Police Department

Emergency: 911

Non-Emergency: 517-355-2221

East Lansing Police Department

Jacey Kingsbury- ELPD FSL Liaison

jkingsbury@cityofeastlansing.com

(517) 351-4220 (Non-emergency Number)

Organization/Chapter Contact Information

| Position | Name | Phone Number |
|---|-------------|---------------------|
| Chapter President | | |
| Chapter Vice President | | |
| Chapter Advisor | | |
| Regional/National Headquarters Contact | | |
| House Manger | | |
| House Director | | |
| Other | | |

Letter from Fraternity and Sorority Director

Dear Michigan State Fraternity and Sorority Community,

Fraternal and sororal organizations' deep connection to a university as well as their inherent influence creates opportunity for these organizations to drive the conversation and forward progress of university initiatives and overall civic engagement. Directing this potential toward mutually beneficial outcomes for both students and the university underscore the charge of those in leadership of our organizations.



Purpose, passion, siblinghood defines the unique experience of membership in a fraternity or sorority. My sorority was founded in 1908 on the campus of Howard University. Founded to create community for women, particularly African American women who were and are systemically marginalized. A group of women came together, created a purpose for the organization, established guiding principles, formed a sisterhood. That sisterhood has spanned the last 115 years. I say this because it is important to know and understand the purpose of the organizations for which you are members. Knowing this, believing this will cause you to hold up the values of your organization, and be inclined to support your fellow brothers, sisters, and siblings.

“Passion is not friendly. It is arrogant, superbly contemptuous of all that is not itself, and, as the very definition of passion implies the impulse to freedom, it has a might intimidating power. It contains a challenge. It contains an unspeakable hope.” -James Baldwin

Some of you are just starting out your college careers. Some of you nearing the end of your college experience. Regardless, you all share a common experience in that you represent something larger than yourselves. Therefore, I implore you to attack this experience with passion. Give all that you are able. Volunteer before you are asked. Do the right thing though it may not be popular. Everything you do has the possibility to impact your organization: good or bad. Passion is about your ability to see the larger picture and figure out how you fit into that picture. You make the letters; the letters don't make you. How will you use your time and talents to amplify the positive impact of your fraternity or sorority. I am excited to see what this will be!

“I do not believe that the accident of birth makes people sisters and brothers. It makes them siblings. Gives them mutuality of parentage. Sisterhood and brotherhood are conditions people have to work at. It's a serious matter. You compromise, you give, you take, you stand firm, and you're relentless...And it is an investment. Sisterhood means if you happen to be in Burma and I

happen to be in San Diego and I'm married to someone who is very jealous and you're married to somebody who is very possessive, if you call me in the middle of the night, I have to come.”

Maya Angelou wrote this quote. She is also an esteemed member of Alpha Kappa Alpha Sorority, Incorporated. Ms. Angelou’s description of sisterhood can’t be better stated. There will be times that your sisters or brothers will make you mad, there will be times that you all cry, there will be times where you laugh and have fun. The most important thread though all this though is that you do it together. Sisterhood and brotherhood do not happen overnight. You must work at it. You must be willing to be vulnerable. You must be willing to be open to new experiences and people you would have never engaged with before. You must be selfless.

My membership in my sorority has brought me lifelong friends and opened career and educational opportunities. I still attend chapter meetings and volunteer opportunities. I still pay dues and participate in the business of my sorority. My membership and participation in my sorority is a lifelong commitment. I hope that you all are prepared to commit yourselves to that as well.

Sisterhood or brotherhood is not confined to any physical space or the ability to be in person. It is the embodiment of love, support, and care that spans time and space.

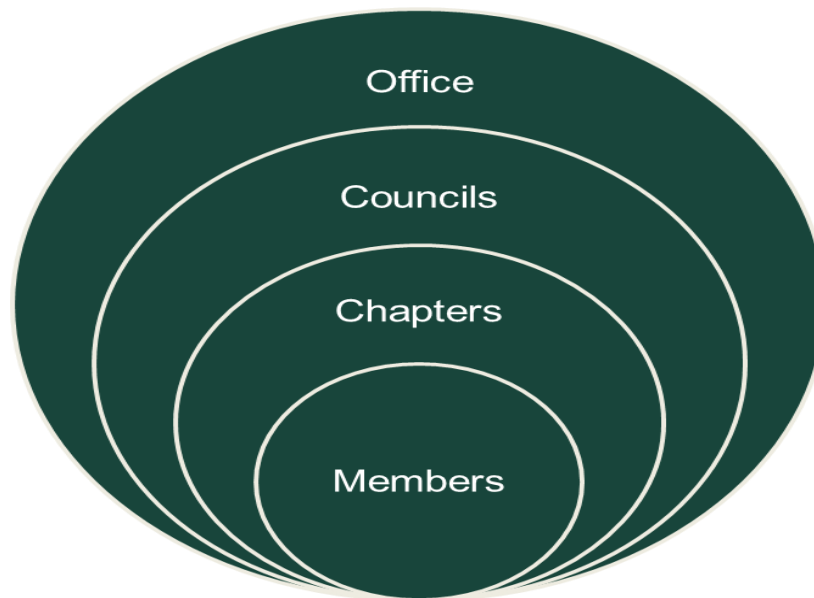
Sincerely,

ShirDonna Y. Lawrence, Ph.D.

ShirDonna Y. Lawrence, Ph.D.
Director, Fraternity and Sorority Live
Michigan State University

Fraternity and Sorority Life Structure and Purpose

Fraternity and Sorority Life Make Up



Fraternity and Sorority Life Office:

Programming/Chapter support

- FSL staff provide support to HQs, chapters on campus.
- We support the individual goals of each organization through helping to find methods of collaboration with other fraternities and sororities and/or community and university partners
- We are not a disciplinary body or office. While we do support our chapters should they find themselves in precarious situations, Fraternity and Sorority Life does not provide sanctions. Those are through councils or the Office of Student Support and Accountability

Education/Training

- We are responsible for developing and implementing and education and training opportunities to support the betterment of the fraternal and sororal experience

Events/Programs

- Fraternity and Sorority Life Office supports our councils in hosting programs and events that both forward the mission of our office, also to increase access to the fraternity and sorority experience

Liaise Between University and Community Partners

Fraternity and Sorority Life Executive Councils:

National Pan-Hellenic Council (NPHC):

- A collaborative umbrella council composed of historically African American fraternities and sororities also referred to as Black Greek Letter Organizations (BGLOs). The NPHC was formed as a permanent organization on May 10, 1930, on the campus of Howard University, in Washington, D.C.
- The council promotes interaction through forums, meetings, and other media for the exchange of information and engages in cooperative programming and initiatives through various activities and functions.
- Each constituent member organization determines its own strategic direction and program agenda. The primary purpose and focus of member organizations remains camaraderie and academic excellence for its members and service to the communities they serve. Each promotes community awareness and action through educational, economic, and cultural service activities.



Interfraternity Conference (IFC):

- Founded in 1909
- The Interfraternity Council (IFC) is the local governing body for National Interfraternity Conference fraternity chapters at the University of Michigan. IFC works to promote the highest ideals of scholarship, leadership, service and fraternalism among its member organizations.
- The Interfraternity Council exists to advance conditions conducive to the success of its member chapters and to promote the progress of the fraternity experience. With this aim, the IFC actively encourages interfraternalism and collaboration with other fraternity/sorority governing councils and student governance bodies. Maintaining a positive working relationship and partnership with the campus administration, alumni, NIC and inter/national headquarters of member chapters is critical toward elevating the role of the IFC.



Multicultural Greek Council (MGC):

- The Multicultural Greek Council is an umbrella council for a coalition of Multicultural Greek-letter organizations (MGLOs) established in 1998. The purpose MGC is to provide a forum that allows for the free exchange of ideas, programs, and services between its constituent fraternities and sororities; to promote the awareness of multicultural diversity within collegiate institutions, their surrounding communities, and the greater community-at-large, and to support and promote the works of its member organizations.
- The Multicultural Greek Council promotes multiculturalism by advocating for justice and equity, cultivating interfraternal relationships, and empowering its member organizations.
- Multiculturalism as not only diversity of membership, but a concrete commitment to acknowledge and celebrate all cultures equally through our programming, public service outreach efforts and community education.



Panhellenic Council (PC)

- The **National Panhellenic Conference (NPC)** is an umbrella organization for 26 (inter)national women's sororities throughout the United States and Canada. Each member group is autonomous as a social, Greek-letter society of college women and alumnae.
- The National Panhellenic Conference provides guidelines and resources for its members and serves as the national voice on contemporary issues of sorority life. Founded in 1902, NPC is one of the oldest and largest women's membership organizations, representing more than 4 million women at over 650 college/university campuses and 4,600 local alumnae chapters in the U.S. and Canada.
- The organization holds a philosophy that it is a conference, not a congress, as it enacts no legislation and only regulates its own meetings. Other than basic agreements which its groups must unanimously vote to follow, NPC confines itself to recommendations and advice and acts as a court of final appeal in any College Panhellenic difficulty. One of its services is providing advisors for college and alumnae Panhellenic organizations.



Fraternity and Sorority Life Chapters:

A local group of the larger (inter)national organization, designated by a given name.

Fraternity and Sorority Life Members:

A fraternity or sorority member is a part of a brotherhood or sisterhood, or siblinghood formed around common goals and aspirations. These individuals make a commitment to each other for life. The members that form a fraternity or sorority share their efforts, friendship, and knowledge.

Fraternity and Sorority Life Staff Areas of Responsibility

ShirDonna:

- Staff oversight as well as serving as the liaison between Fraternity and Sorority Life the larger MSU and East Lansing community.
- Strategic planning, development and implementation related to bettering the fraternal experience and connecting the FSL experience to MSU and SLE university and divisional goals
- Provide advisement to the MGC

Elana:

- Provides administrative leadership in tasks such as FSL scorecards and roster management
- Coordinates events and programs
- Provides intensive advisement to NPHC and PC programs and events

Hayley

- Provides leadership and coordination of major events and programs hosted by joint councils and FSL office
- Provides intensive advisement to IFC and Order of Omega

Charge of the Fraternity and Sorority Staff:

Through collaboration with students, international organizations, alumni, and the Division of Student Life and Engagement, Fraternity and Sorority Life at Michigan State University fosters a holistic college experience by providing opportunities for scholarship, leadership, and community service.

These three opportunities have been outlined by our unit as the foundation of healthy and successful fraternity and sorority chapters and advance the missions of each of our chapters. The defining opportunities are in line with the Division of Student Leadership and Engagement and furthers the values and goals of the Michigan State University.

Fraternity and Sorority Life Requirements

Important Dates

| Form/Document | Location | Date |
|--|------------------------------|--|
| Chapter Roster Adjustments Completed | | Fall Semester: October 1 st Spring Semester: March 1 st |
| FSL Programming Fee Assessed | Assessed via Councils | Fall Semester: October 1 st Spring Semester: March 1 st |
| Chapter Officer Transition Engage Form | Campus Labs Engage | First Day of Spring Semester (Or change in leadership occurs) |
| Summer Chapter Housing Form | Campus Labs Engage | Last day of Spring Semester |
| Community Grade Reports Released | Emailed to Chapter President | Fall Semester Info: February 1 st Spring Semester Info: July 1 st |
| Membership Intake Packet | | See Packet |

Chapter Education Compliance Information

| Date & Time | Topic | Facilitator | Audience |
|---------------|--|---------------------------------------|--|
| January | Fraternity and Sorority Life Retreat | FSLP Staff | Council Officers, Chapter Presidents, Advisors |
| February | Association of Fraternal Leadership and Values | Conference Staff and National Experts | Council Officers |
| Each Semester | Greeks Take the Lead | Prevention, Outreach and Education | All Members |
| August | Fraternity and Sorority Life Kick Off | FSLP Staff/ Campus Partners | Council Officers, Chapter Presidents |

Fraternity and Sorority Life Retreat: Training hosted at the start of the spring semester to provide council and chapter leadership with necessary information and resources. This opportunity also serves as a space for networking and interfacing with university and community partners.

Greeks Take the Lead: The Greeks Take the Lead Program is a mandatory workshop series for all fraternity and sorority chapters that are currently registered student organizations (RSOs) or are hoping to become an RSO. The Greeks Take the Lead Program serves as a way to help fraternity and sorority students feel empowered by providing further education on how they can intervene and end sexual violence in their chapters and greater community. All chapter presidents and a council member involved in risk reduction (or a leadership member interested in risk reduction) participate in leadership-based interactive trainings and all general members are required to choose a workshop focused on a specialized topic.

Fraternity and Sorority Life Kick Off: Training hosted at the start of the fall semester to provide council and chapter leadership with necessary information and resources. This opportunity also serves as a space for networking and interfacing with university and community partners.

Membership Expectations

Operating as a Fraternity or Sorority at the Michigan State University is a great privilege. With that privilege comes many benefits that we hope will help your organization to thrive. These benefits create opportunities for leadership, growth and development, healthy and safe environments, and the creation of an inclusive community. With these benefits and opportunities come certain expectations and responsibilities.

It is your responsibility as leadership for your organization to understand these policies and guidelines, including how to enact them within your own chapter. Lack of information is not an excuse for lack of compliance. If at any point, you have questions about any of these policies or guidelines, please don't hesitate to reach out to any FSL staff.

It is the expectation that all organizations abide by both Michigan State University policies and Fraternity and Sorority Life operational guidelines. Those two sections are outlined below:

Michigan State University Policies

- [Student Rights and Responsibilities](#)
- [MSU Student Organization Conduct Policies and Procedures](#)
- Student Organizations (SO) are members of the MSU community. With this membership come benefits and responsibilities. The General Student Regulations, the Student Rights and Responsibilities, and other student conduct policies form the basis for the behavioral expectations in the MSU community.
- For the purposes of the SO Code of Conduct, a SO is defined as any group whose membership consists of students currently enrolled at the University that is: (1) registered with the Office of Student Life and Engagement; or (2) affiliated with the University through an academic department or administrative entity which supports, endorses, supervises, or recognizes the organization, unless the Senior Vice President for Student Life and Engagement otherwise determines the organization is a University function.
- Alleged violations of the SO Code of Conduct by a SO will be adjudicated by the Office of Student Support and Accountability (OSSA).¹ Alleged conduct violations by individual SO officers or members will also be adjudicated by the OSSA, as prescribed in the Student Rights and Responsibilities.
- The extent and terms of disciplinary action against a SO will depend upon the nature and severity of the infraction, as well as any history of previous violations. A SO must be in good standing to maintain its registration status.
- The primary intent of the SO disciplinary process is to guide behavior and correct misconduct in a manner consistent with University policies and procedures. Through education and promoting critical decision-making, the disciplinary process seeks to help SOs avoid future misconduct and repair any harm done. As such, sanctions levied in the

disciplinary process will be commensurate with the seriousness of the offense, with the understanding that repeat violations may justify increasingly severe sanctions.

- ***Greek-letter organizations affiliated with the Interfraternity Council, Panhellenic Council, National Pan-Hellenic Council, or Multicultural Greek Council must abide by the conduct policies established by their respective governing body, as well as the SO Handbook.***

Fraternity and Sorority Life Operational Guidelines

- General Expectations
 - Follow the standards and trainings of your prospective organization and evaluate how they coincide with Michigan State University policies
 - Comply with:
 - University policies
 - Fraternity and Sorority-specific guidelines and policies
 - Council specific constitutions, bylaws, and guidelines
 - Chapters agree to:
 - Chapters to fully initiate their new members and hold any new member presentations/bid days by established deadline
 - Chapters will attend council meetings and financially support their governing council.
 - Chapter officers will read and understand the governing council's constitution and bylaws and guidelines and their individual chapter's constitution and bylaws.
 - Support Council programming
 - Presidents will inform the Fraternity and Sorority Life office of any emergencies or serious situations.
- Administrative Expectations Turn in required membership intake and/or recruitment information as relevant for your organization
 - Secure a chapter advisor that focuses on the daily operations of the chapter
 - Chapter will maintain accurate and up-to-date financial records at all times
 - Chapter will pay both FSL Programming Fee dues and council specific dues by the due date outlined or risk facing loss of organization recognition
 - Chapters will maintain an up-to-date roster with the Fraternity and Sorority Life office
 - These updates must be made during designated update periods
 - This roster will be used for all official University events (attendance, programming fee, disciplinary concerns, etc.)
 - Chapters will turn in the following for the FSL scorecard:
 - Number of service hours performed and who received the service at the end of each semester
 - Dollars raised for charity and who received it at the end of each semester

- Assessment information for each chapter per Assessment Evaluation needs.
 - Chapters will turn in the Chapter Officer Transition Form after chapter elections
 - Utilize the Fraternity and Sorority Life web site for updates, calendar, forms, stats, etc.
 - Attentive to important dates and email updates
- Meetings/Trainings Expectations
 - Attend training sessions, education sessions, round tables, monthly President Meetings, etc.
 - Chapters to fully initiate their new members and hold any probates/bid days by established deadline
 - Chapter Presidents will have regularly scheduled meetings with their council advisor.
 - Council officers and Presidents will attend President meetings monthly.
 - Chapter presidents and council officers will attend beginning of semester trainings including Fraternity and Sorority Life Kickoff and Fraternity and Sorority Life Retreat
 - Position specific trainings (judicial board, new member educators, etc.)
 - Chapter officers will attend designated training sessions for Presidents or assign others to attend.
- Education Expectations
 - Complete required Greeks Take the Lead (GTTL) opportunities

Fraternity and Sorority Life Programming Fee

Interfraternity Council and Panhellenic Council Agreement:

Per the agreement with the Michigan State University, the Interfraternity and Panhellenic Councils will pay ten dollars per semester per member to Michigan State University (MSU). IFC will be charged a total of \$20,000.00 for the incurred expenses and continued support of the operations within the Fraternity & Sorority Life Office during the fall and spring semesters.

Multicultural Greek Council Agreement:

Per the agreement with the Michigan State University, the Multicultural Greek Council will pay ten dollars per semester per member to Michigan State University (MSU). MGC will be charged a total of \$750.00 for the incurred expenses and continued support of the operations within the Fraternity & Sorority Life Office during the spring and fall semesters.

National Pan-Hellenic Council Agreement:

Per the agreement with the Michigan State University, each National Pan-Hellenic Council will pay ten dollars per semester per member to Michigan State University (MSU). NPHC will be charged a total of \$1,000.00 for the incurred expenses and continued support of the operations within the Fraternity & Sorority Life Office during the fall and spring semesters.

Payment

- Methods
 - Payments are due 10 business days following the invoice date
 - Payments can be made in the following ways:
 - By check payable to Michigan State University delivered or mailed to the following address:

Michigan State University
Attn: ShirDonna Lawrence
Student Services Building
556 E. Circle Dr., Suite 315
East Lansing, MI 48824-1113
 - Transfer of Funds from your on-campus University Account. Please email Karen Wood at woodk@msu.edu to request a transfer of funds, providing the account number.
- Notices
 - FSL Programming Fees are separate from council dues. Your organization is responsible for paying both council dues and FSL programming fees
 - Prepare for this payment. This fee will be assessed at the same time each semester and the amount of the fee per member will always be known in advance. Please make sure your budget reflects this payment
 - This advance knowledge, as well as the reoccurring nature of the fee each semester is why payment plans are not offered for the FSL programming fee. If an emergency arises, you are welcome to contact FSLP staff
 - The FSL programming fee will be assessed on the following dates:
 - Fall Semester: October 1st
 - Spring Semester: March 1st
- Fee notice will be sent to council presidents and treasures on the specified dates of each semester
- Once invoices are assessed and sent, the number of members indicated on the invoice will not be changed and the amount due will not be adjusted
 - It is the responsibility of the chapter president to make sure their organization roster is up to date to make sure each organization is charged appropriately

Grade and Photo Release

This will be made available later in spring 2023

I hereby authorize the use of Michigan State University student information systems in the release of specific education record information to Fraternity and Sorority Life (FSL), my chapter, and my Inter/National organization, including number of hours earned each semester, date of birth, mid-semester class grade reports, semester grade point average, cumulative grade point average, and any academic honors. There will be no information that identifies classes taken by course name or identify individual class grades, except for mid-semester class grade reports. In publicizing any academic achievements or leadership achievements I earn, I authorize FSL to disclose my chapter membership along with my education record information to the general public. Furthermore, I permit the Office of the Dean of Students and/or Office of Student Support and Accountability to release public crime record information to FSL, my chapter, and my Inter/National organization. I understand that I may revoke this release at any time by writing to FSL.

The purpose for this release is to verify with my fraternity/sorority my eligibility for membership and to aid scholarship program development. FSL calculates fraternity and sorority grade point averages using individual member semester grade point averages. Chapter grade point averages are released to the public without individual members identified and without individual grade point averages identified. The disciplinary and/or crime record information on individual members is distributed to my chapter in order to aid in membership development and accountability. When chapter citation/arrest rates are released to the public, individual students will not be identified.

FSLP will maintain my semester and cumulative grade average information and any public crime record information on file for two years after separation from the University. While on file, the information will be released only to my fraternity/sorority president, current chapter advisor, and Inter/National organization. My fraternity/sorority president or FSL may disseminate the information to appropriate local chapter officers and Inter/National and regional representatives as needed.

Yes/No

By signing this release, I also authorize FSL to use and reuse photographs and/or video files which are in the custody of FSL and which contain my image, and to use and distribute my information for research purposes. The scope of the personal image release includes photographs and/or video files used in whole or in part in any print or electronic media and for any purposes whatsoever, including without limitation, all promotional or publicity uses. I hereby release Michigan State University; the State of Michigan; and the Board of Trustees of Michigan State University; and their employees, agents, and representatives, from liability for any violation of any personal or proprietary right I may have in connection with such use. I

January 2023

understand that all such photographs and/or video files, in whatever medium, shall remain the property of FSL. I have read and fully understand the terms of this release.

Yes/No

Type Full Name (As it appears on University Records)

Note: This will act as your electronic signature

Date (Ex: 01/21/2023)

Member University ID# (University ID is a letter and 9-digit number listed on your Spartan Card. This is NOT your NET ID)

Please select your fraternity/sorority from the drop-down list below:

New Member: Yes/No

Initiated Member Yes/No

Anti-Hazing Agreement

I hereby adhere to the General Student Regulations and the Student Organization Code of Conduct prohibit harassment, assault, and other forms of threatening behavior. When threatening behavior takes place within the context of a student organization or club and is directed at a student interested in participating in group activities, sanctions will be imposed upon the group or club as well as the students. Upon receipt of a complaint, OSSA will work with the Office of Spartan Experiences to adjudicate the complaint in accordance with the applicable disciplinary procedures for student organizations and individual students. Groups and individual students found responsible for hazing will be held accountable. Sanctions for violating the University's hazing regulations range from warning or probation up to dismissal.

I hereby understand and accept that In addition to institutional sanctions, a person who commits an act of hazing may be subject to criminal sanctions under the [Michigan Penal Code Act 328 of 1931 Section 250.411t](#).

I hereby understand and accept that the University defines hazing as Hazing is defined as "requiring or encouraging any act, whether or not the act is voluntarily agreed upon, in conjunction with initiation, affiliation with, continued membership, or participation in any group, that causes or creates a substantial risk of causing mental or physical harm or humiliation." See [General Student Regulations](#), Appendix A.

I hereby understand and accept that a claim that the individual against whom the hazing was directed consented to or acquiesced in the hazing is not considered a mitigating factor or justification for hazing of any form. Consent or acquiescence to hazing is never a defense.

January 2023

Acts of hazing include, but are not limited to:

- Any physical act of violence or intimidation.
- Forced physical activities (e.g. working out excessively).
- Peer-pressuring or coercing someone to consume any legal or illegal substance.
- Placing foreign substances on one's body or that of another (e.g., using a permanent marker on the body).
- Not allowing someone to use or possess certain items.
- Depriving individuals of sleep, meals, ways to keep their body clean, or means of communication (e.g., restricting access to cell phones).
- Forcing an individual to create and/or distribute digital content to cause ridicule or embarrassment (e.g., posting photos or videos to social media).
- Forcing someone to expose themselves to weather.
- Activities such as scavenger hunts, pledge ditches, kidnapping, forced road trips, or abandonment (e.g., leaving someone in a field with no way to get home or contact anyone), which result in illegal or otherwise prohibited conduct.
- Requiring someone to possess specific items (e.g., carry a brick).
- Servitude (e.g., expecting a new member to do the tasks of an existing member).
- Changing appearance (e.g., wearing a costume or shaving head).
- Line-ups and berating.
- Coerced lewd/sexually explicit conduct (e.g., nudity) or sexual acts.
- Engaging in games, activities or public stunts that are purposely degrading or intend to cause embarrassment.
- Interference with academic pursuits (e.g., not permitting someone to attend class or exams)
- Violation of University policies.
- Requiring illegal and/or unlawful activities.

I hereby understand and accept that any requirement imposed upon prospective, new, or current members which is not related to the organization's purpose is discouraged and will become the subject of a University investigation once the practice is brought to the attention of the Office of Student Support and Accountability.

I hereby understand and accept that this policy applies to all MSU students and all MSU student organizations and clubs. Some University programs promulgate anti-hazing policies specifically for students participating in their programs.

Reporting

Any incident involving a crime, an emergency, or an imminent threat to the health or safety of any person should be reported immediately to local law enforcement authorities by dialing 911.

Acts or potential acts of hazing that do not constitute an emergency should be reported to the Office of Student Support & Accountability ([OSSA](#)). Concerns may also be reported anonymously through the [MSU Misconduct Hotline](#). Students residing in a residence hall may report to a Resident Assistant (RA) or Residence Education and Housing Services (REHS) staff member in their residence hall. Community members may contact the MSU Department of Police and Public Safety (MSUPD) at the non-emergency number (517) 355-2221 or by texting anonymously the word "MSUPD" along with a tip to CRIMES (274637). Other resources include the National Hazing Prevention Hotline at 1-888-NOT-HAZE or 1-888-668-4293.

Type Full Name (As it appears on University Records)

Note: This will act as your electronic signature

Date (Ex: 01/21/2023)

Member University ID# (University ID is a letter and 9-digit number listed on your Spartan Card. This is NOT your NET ID)

Please select your fraternity/sorority from the drop-down list below:

New Member: Yes/No

Initiated Member Yes/No

Fraternity and Sorority Life Reference Information

Council and Chapter Leadership Information

Interfraternity Council Executive Board

| Title | Name | Officer Email |
|--------------------------|--------------------|--|
| President | Sawyer McClure | ifcpresident@greeklife.msu.edu |
| Executive Vice President | Freddy Norfolk | ifcexecutivevp@greeklife.msu.edu |
| VP Finance | AJ Ferenczy | ifcvpfinance@greeklife.msu.edu |
| VP Internal Relations | Jacob Cardenas | ifcvpinternalrelations@greeklife.msu.edu |
| VP Community Relations | Tommy Rabaut | ifcvpcommunityrelations@greeklife.msu.edu |
| VP Recruitment | Brendan Cwiklinksi | ifcvprecruitment@greeklife.msu.edu |
| VP Programming | Will Barnes | ifcvpprogramming@greeklife.msu.edu |
| VP Communications | Drew Nystrom | ifcvpcommunications@greeklife.msu.edu |

Interfraternity Council Presidents

| Chapter | President | Email |
|------------------------------|-------------------|--|
| Alpha Epsilon Pi (AEPi) | Ben Hetchler | hetchle2@msu.edu |
| Alpha Gamma Rho (AGR) | Broxten Davis | davisb99@msu.edu |
| Alpha Kappa Psi (AKPsi) | Noah Zukauskas | zukausk1@msu.edu |
| Alpha Sigma Phi (Alpha Sig) | Treyjen Keim | keimtrey@msu.edu |
| Beta Theta Pi (Beta) | Ethan Leadbetter | leadbet8@msu.edu |
| Delta Kappa Epsilon (Deke) | Huston Born | bornhust@msu.edu |
| Delta Sigma Phi (Delta Sigs) | Joey Loeschner | loeschn1@msu.edu |
| FarmHouse | Nick Harry | harrynic@msu.edu |
| Kappa Sigma | Ethan Timms | timmseth@msu.edu |
| Phi Delta Theta (Phi Delt) | Brian Fraser | fraserb5@msu.edu |
| Phi Gamma Delta (FIJI) | Charlie Cochrane | cochr134@msu.edu |
| Phi Kappa Psi (Phi Psi) | Carter Pickering | picker31@msu.edu |
| Phi Kappa Sigma (Phi Kapps) | Jake Gentry | gentryj3@msu.edu |
| Phi Kappa Tau (Phi Tau) | | |
| Pi Kappa Alpha (Pike) | Noah Petrovski | petrov43@msu.edu |
| Pi Kappa Phi (Pi Kapps) | Bradley Angus | angusbra@msu.edu |
| Psi Upsilon (Psi U) | Theron Mandeville | mandev18@msu.edu |
| Sigma Alpha Epsilon (SAE) | Jason Ross | rossjas5@msu.edu |
| Sigma Alpha Mu (Sammy's) | Graham Schulte | schul780@msu.edu |
| Sigma Beta Rho (Sig Rho) | Sneh Patel | patelsn5@msu.edu |
| Sigma Nu (SNU) | Nicholas Lee | leenich5@msu.edu |

| | | |
|---------------------------|-----------------|--|
| Sigma Pi | Danny Nikolic | nikolic2@msu.edu |
| Sigma Tau Gamma (STG) | Jacob Smith | smit3077@msu.edu |
| Tau Kappa Epsilon (Tekes) | Noah Nowakowski | nowako39@msu.edu |
| Theta Chi | Wilson Day | daywilso@msu.edu |
| Theta Delta Chi (TDX) | Josh Anderson | ande2252@msu.edu |
| Triangle | Kaan Ulasan | ulasanka@msu.edu |

Multicultural Greek Council Executive Board

| Title | Name | Officer Email |
|----------------------------------|--------------------|--|
| President | Shanel Baxter | msumgcvpexternal@gmail.com |
| Vice President | Thailyn Cordona | msumgcvp@gmail.com |
| Vice President of Finance | Amos Amigon | msumgcvpfinance@gmail.com |
| VP Internal Affairs | Joanna Zhan | msumgcvpinternal@gmail.com |
| VP External Affairs | | |
| VP Philanthropy | | |
| Vice President of Communications | Christina Alcantar | msumgcvpcommunications@gmail.com |

Multicultural Greek Council Presidents

| Title | Name | Email |
|-----------------------|-------------------|--|
| alpha Kappa Delta Phi | Joanna Zhan | jzhan2314@gmail.com |
| Delta Tau Lambda | Ana Escobar | escoba18@msu.edu |
| Kappa Delta Chi | Jennifer Aguilar | aguila57@msu.edu |
| Lambda Theta Alpha | Alondra R. Torres | Torres73@msu.edu |
| Lambda Theta Phi | Freddy Horta | hortaal1@msu.edu |
| Lambda Phi Epsilon | Silas Yang | yangsila@msu.edu |
| Phi Iota Alpha | Donny Hernandez | herna579@msu.edu |
| Sigma Lambda Beta | Carlos Panuco | panuoca@msu.edu |
| Sigma Lambda Gamma | Thailyn Cordona | cardonat@msu.edu |

National Pan-Hellenic Council Executive Board

| Title | Name | Email |
|-------|------|-------|
|-------|------|-------|

| | | |
|-------------------------|----------------------|--|
| President | Samara Zinnerman | zinnerm1@msu.edu |
| Internal Vice-President | Marquan Windom | Windomma@msu.edu |
| External Vice-President | Marcus McDaniel | mcdan145@msu.edu |
| Treasurer | Jordan Thornhill | Thornh16@msu.edu |
| Secretary | Siara Smart | Smartsia@msu.edu |
| Historian | Dylan Kemp | Kempdyla@msu.edu |
| Parliamentarian | Anthony Little-Smith | Littl126@msu.edu |
| ASMSU Representative | Brandon Foster | foste324@msu.edu |
| RHA Representative | Jalen Tate | tatejale@msu.edu |
| UAB Representative | Kamryn Sarratt | sarrattk@msu.edu |
| BSA Representative | Darryl Allen | allend33@msu.edu |

National Pan-Hellenic Council Presidents

| Chapter | Name | Email |
|------------------------------------|------------------|--|
| Alpha Kappa Alpha - Delta Zeta | Breanna Williams | dzaka1908@gmail.com |
| Alpha Phi Alpha- Zeta Delta | Dwight Reed III | alphaphialphazd@gmail.com |
| Delta Sigma Theta- Epsilon Epsilon | Caiyah Stephens | dstee1913@gmail.com |
| Iota Phi Theta- Gamma Mu | | gammamuiotas@gmail.com |
| Kappa Alpha Psi- Delta Pi | Dylan Kemp | DPiNupes1956@gmail.com |
| Omega Psi Phi- Sigma | Jordan Thornhill | msuques@gmail.com |
| Phi Beta Sigma- Delta Kappa | Bishop Colding | Msusigmas@gmail.com |
| Sigma Gamma Rho- Gamma Omega | Cha'Brea Weaver | sigmagam@gmail.com |
| Zeta Phi Beta- Phi Gamma | Carcia Young | phigammazetas@gmail.com |

Panhellenic Council Executive Board

| Title | Name | Email |
|--------------------------|----------------|--|
| President | Sophia Verzosa | pcpresident@greeklife.msu.edu |
| Executive Vice President | Grace Hocking | pcexecutivevp@greeklife.msu.edu |
| VP Risk | Yasmeen Amjad | pcvprisk@greeklife.msu.edu |
| VP Recruitment Logistics | Marissa Toney | pcvpreruitmentlogistics@greeklife.msu.edu |
| VP Recruitment Guides | Ashley Smith | pcvpreruitmentguides@greeklife.msu.edu |

| | | |
|------------------------|---------------------|--|
| VP Finance | Kailey Mangold | pcvpfinance@greeklife.msu.edu |
| VP Internal Relations | Avonleigh Blackhorn | pcvpinternalrelations@greeklife.msu.edu |
| VP Community Relations | Erin Martino | pcvpcommunityrelations@greeklife.msu.edu |
| VP Communications | Eliza Gay | pcvpcommunications@greeklife.msu.edu |

Panhellenic Council Presidents

| Title | Name | Email |
|-------------------|--------------------|--|
| Alpha Chi Omega | Bri Mattson | Mattso73@msu.edu |
| Alpha Omicron Pi | Brooke Donovan | donov114@msu.edu |
| Alpha Xi Delta | Chloe Peterson | pete1459@msu.edu |
| Alpha Phi | Mackenzie Driscoll | drisco85@msu.edu |
| Chi Omega | Ireland Watts | wattsire@msu.edu |
| Delta Gamma | Ella Woehlke | Woehlkee@msu.edu |
| Gamma Phi Beta | Joie Egizio | egiziojo@msu.edu |
| Kappa Alpha Theta | Delaney Flavin | flavinde@msu.edu |
| Kappa Delta | Skylar Hill | hillskyl@msu.edu |
| Kappa Kappa Gamma | Ava Bondra | bondraav@msu.edu |
| Pi Beta Phi | Brooke Zeiter | zeiterbr@msu.edu |
| Sigma Delta Tau | Eleanor Weiss | Weissele@msu.edu |
| Sigma Kappa | Makenna Rickey | rickeyma@msu.edu |
| Zeta Tau Alpha | Bella Slifko | slifkois@msu.edu |

Fraternity and Sorority Chapter Structure Information

| Organization | Address | Capacity |
|-----------------------------|---------------------|----------|
| Alpha Chi Omega | 243 Burcham Dr. | 49 |
| Alpha Epsilon Pi (AEPi) | 225 N. Harrison | 37 |
| Alpha Gamma Rho (AGR) | 432 Evergreen Ave. | |
| Alpha Kappa Psi (AKPsi) | 123 Louis St. | 12 |
| Alpha Omicron Pi | 333 Charles St. | 33 |
| Alpha Phi | 616 M.A.C. Ave. | 50 |
| Alpha Sigma Phi (Alpha Sig) | 131 Bogue St. | 40 |
| Alpha Xi Delta | 855 Grove St. | 43 |
| Beta Theta Pi (Beta) | 207 Bogue St. | 20 |
| Chi Omega | 229 Burcham Dr. | 47 |
| Delta Gamma | 365 N. Harrison Rd. | 41 |

| | | |
|------------------------------|---------------------------------|------------------------------|
| Delta Kappa Epsilon (Deke) | 1148 E. Grand River | 31 |
| Delta Sigma Phi (Delta Sigs) | 1218 E. Grand River | |
| FarmHouse | 151 Bogue St. | |
| Gamma Phi Beta | 258 Michigan Ave. | 40 |
| Kappa Alpha Theta | 303 Oakhill Ave. | 42 |
| Kappa Delta | 528 M.A.C. Ave. | 33 |
| Kappa Kappa Gamma | 605 M.A.C. Ave. | 45 |
| Kappa Kappa Gamma | 217 Beech St. | 0 |
| Kappa Sigma | 335 Hillcrest Ave. | |
| Phi Delta Theta (Phi Delt) | 626 Cowley Ave. | 28 |
| Phi Gamma Delta (FIJI) | 729 E Grand River Ave. | 35 |
| Phi Kappa Psi (Phi Psi) | 101 Woodmere Ave. | 41 |
| Phi Kappa Sigma (Phi Kapps) | 437 Abbott Rd. | |
| Phi Kappa Tau (Phi Tau) | 120 Spartan Ave. | |
| Pi Beta Phi | 343 N. Harrison Rd. | 21 |
| Pi Kappa Alpha (Pike) | 301 Charles St. | 35 |
| Pi Kappa Phi (Pi Kapps) | 520 Linden | 27 |
| Psi Upsilon (Psi U) | 810 West Grand River Ave. | 24 |
| Sigma Alpha Epsilon (SAE) | 342 N. Harrison Road | 49 |
| Sigma Alpha Mu (Sammy's) | 217 Bogue St. | 10 |
| Sigma Delta Tau | 427 M.A.C. Ave. | 23 |
| Sigma Kappa | 518 M.A.C. Ave. | 44 |
| Sigma Nu (SNU) | 110 Oakhill Ave | 18 |
| Sigma Pi | 330 N. Harrison | |
| Sigma Tau Gamma (STG) | 710 Oak Street & 312 N Harrison | 7 at Oak, 8 at Harrison = 15 |
| Tau Kappa Epsilon (Tekes) | 334 Michigan Ave | |
| Theta Chi | 453 Abbott Road | 27 |
| Theta Delta Chi (TDX) | 445 Abbot Road | |
| Triangle | 242 N. Harrison St. | |
| Zeta Psi | 227 Bogue St. | 16 |
| Zeta Tau Alpha | 639 M.A.C. Ave. | 46 |

****Please note that chapter structures are owned and operated by individual organizations and not Michigan State University Fraternity and Sorority Life. The information provided is information provided from each organization.***

Academic Break Procedure for Organization Structures

During university academic breaks, Fraternity and Sorority Life must be provided with contact information for those residents that will stay in the home over the following academic breaks:

- Winter Break
- Spring Break
- Summer Break

Chapter leadership should send the following information to FSLP:

- Name
- University Email
- Phone number
- Emergency contact information for each resident (name, phone number, email)
- The information for those staying should be submitted via email to Fraternity and Sorority Life at least 2 weeks prior to the beginning of the break.
 - Send to:
 - ShirDonna Lawrence
 - lawre396@msu..edu
- The chapter must be in good standing with the university which includes:
 - All fire safety requirements have been met during the regular semester inspection

Roster Submission Instructions

1. Chapter rosters must be updated by:
 - a. Fall Semester: October 1st
 - b. Spring Semester: March 1st.
2. Each Chapter President will find their chapter folder where they will see their past rosters and the current semester roster to update.
3. Please edit your current chapter roster and remove any graduated or resigned members. Please also move your past semester new members up into the active member section.
4. Once you have new members for this semester please add their information to your current semester roster under the new member section.
5. Please verify all MSU emails before you finalize your roster.
 - a. **All student email addresses submitted must end in @msu.edu.**
 - b. How to verify: Send an email to everyone on your roster. If emails bounce back, they are incorrect and you can follow up accordingly.
6. Please have your Chapter Advisor review your roster as well to make sure it is correct.
7. Please add the date of update at the top of your roster in order for the staff to know you have made changes.

8. After the specified date each semester, you will have to submit changes via form that will be provided. Your access the document will be changed to view only so we can make necessary updates to the rosters as staff members.
9. If you have questions regarding this process or your roster, please contact Elana Levy, Assistant Director for Fraternity and Sorority Life via levyelan@msu.edu

Appendices

Commonly Used Fraternity and Sorority Life Terms

Active: a member who has been initiated into lifelong fraternity or sorority membership and is active at the collegiate level.

Alumni/ae: initiated fraternity or sorority members who have graduated from college.

Bid: a formal invitation to join a particular sorority or fraternity.

Big brother/Big sister: an active member who serves as a mentor to a new member during their new member program.

Call: a vocal sound used by members of NPHC and MGC organizations to acknowledge one another.

Chapter: the local group of a larger national organization designated by a special name or Greek letters.

Continuous open bidding/recruitment: an informal recruitment process that takes place after the conclusion of formal panhellenic recruitment.

Formal Panhellenic Recruitment: a series of events given by each sorority that are designed to introduce sorority life to potential new members. Formal recruitment is scheduled by the panhellenic council.

House Director: a person hired by the housing corporation board to live in the chapter house and supervise the facility.

IFC Recruitment: a week-long period in which fraternities and potential new members become acquainted.

Initiation: the formal ceremony that marks the beginning of active membership. Each chapter has a different set of initiation requirements.

Interfraternity Council (IFC): The Interfraternity Council (IFC) is the local governing body for National Interfraternity Conference fraternity chapters at the University of Michigan.

International/national headquarters: the central organization of a particular fraternity or sorority.

Legacy: a prospective member whose grandparent, parent, or sibling is an alumnus of, or active in, a particular fraternity or sorority. (please note that most organizations are not obligated to pledge or extend bids to legacies.)

Line: term used to describe the members of a new member class in NPHC and MGC organizations.

Membership intake: the process that NPHC and MGC chapters utilize to recruit, interview, select, and initiate new members. The period of membership intake varies, but cannot exceed eight weeks.

Multicultural Greek Council (MGC): The Multicultural Greek Council is an umbrella council for a coalition of Multicultural Greek-letter organizations (MGLOs)

National Pan-Hellenic Council (NPHC): the governing body for the 9 historically Black fraternities and sororities. This is also the name of the national governing body and is sometimes referred to as the divine nine.

Neophyte: a member of the last line to cross in the local chapter of a NPHC or MGC organization.

New Member/Pledge: a member of a fraternity or sorority going through the new member education/pledging process.

New Member Education Program: a period of education when new members learn the history, ideals, and values of fraternity and sorority life. The timeframe varies, but cannot exceed eight weeks.

New Member Educator/Membership Intake Chair: the liaison between new members and the chapter. This person is responsible for implementing and monitoring the new member program and preparing new members for initiation.

Order of Omega: order of omega is a leadership honor society for members of fraternities and sororities.

Panhellenic Council: the governing body for the 8 national panhellenic conference sororities/women's fraternities.

Philanthropy: a charitable fundraiser sponsored by a sorority or fraternity.

Potential new member (pnm): a college student participating in recruitment.

Presentation show/probate: the introduction of a line to campus. This is usually the first full step show/ exhibition performed by members of the new member class of MGC or NPHC organization.

Prophyte: a neophyte becomes a prophyte after another line is initiated.

Recruitment/rush chair: an active member of a sorority or fraternity who is in charge of recruitment efforts for the chapter.

Recruitment counselor: a trained Panhellenic or Interfraternity Council member who has disassociated herself from her chapter during recruitment in order to counsel and assist potential new members during recruitment.

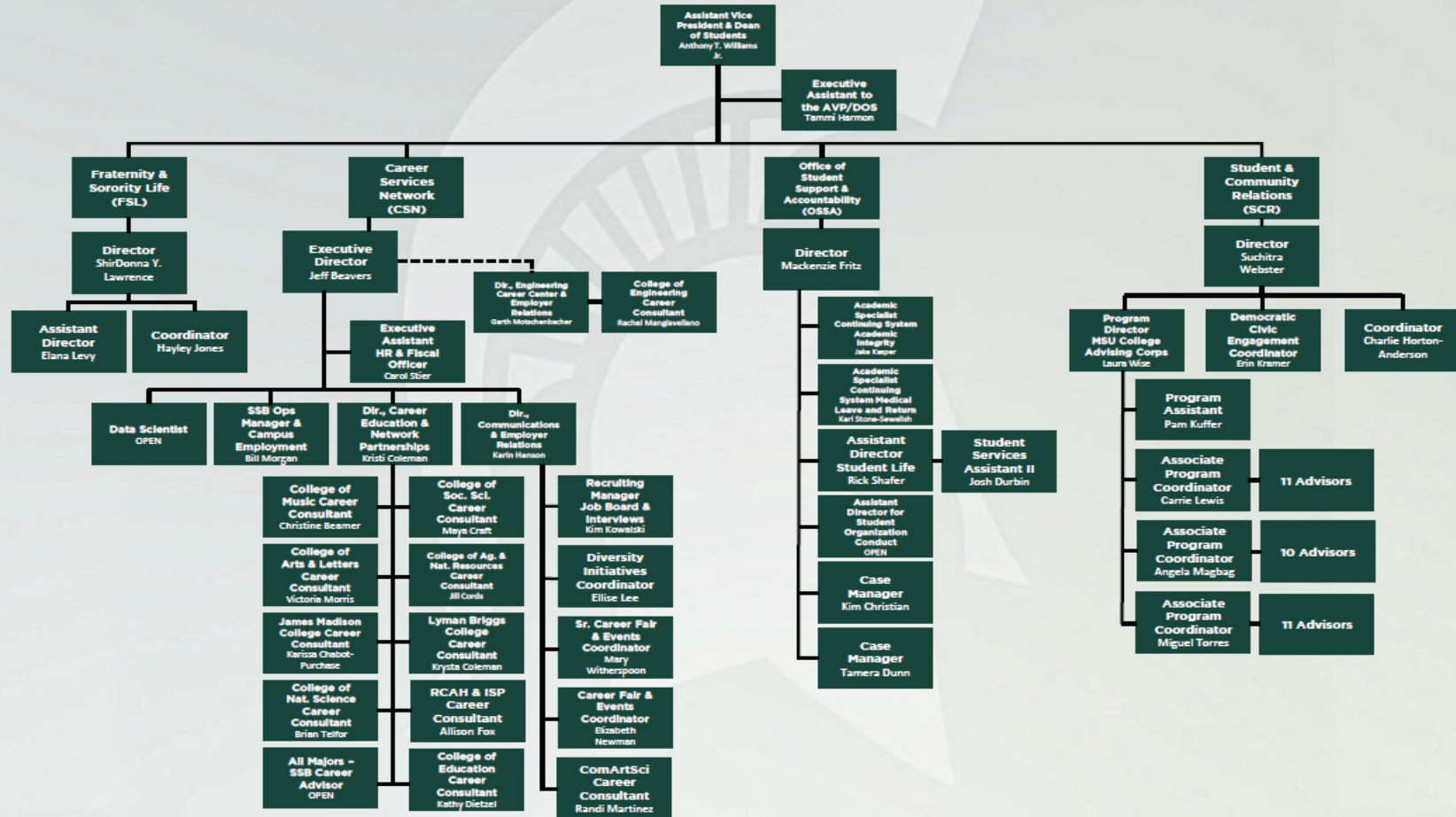
Social: a get-together with another group for a party, dinner, or fun occasion.

Stroll or party hop: a line dance by members of NPHC or MGC organizations.

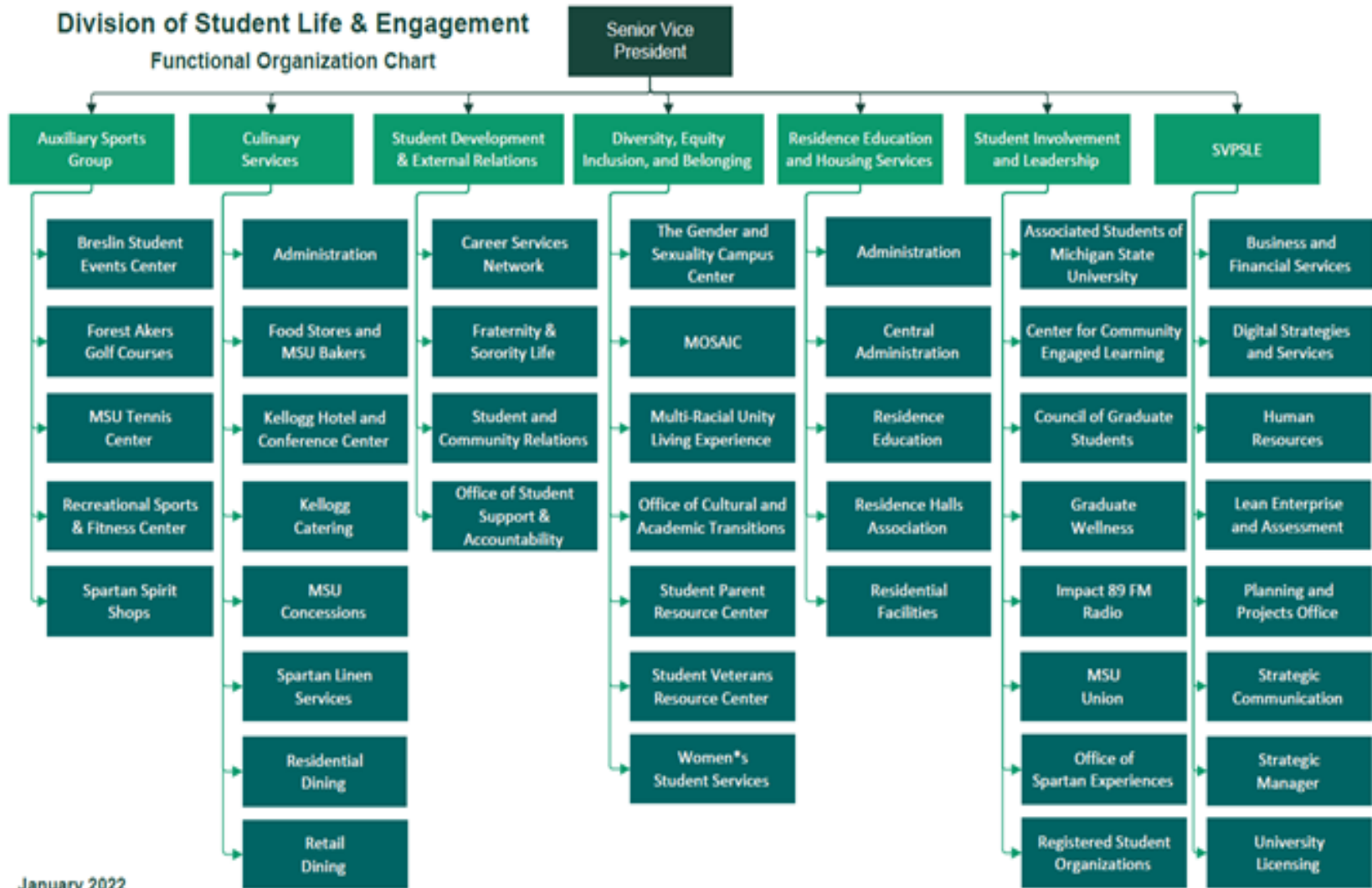
Step: synchronized movements using hands, feet, and props (i.e. Canes) to create rhythmic beats. Seen at step shows performed by NPHC organizations.

Student Development and External Relations (SDER) Organizational Chart

Student Development and External Relations (SDER) Organizational Chart



Student Leadership and Engagement Organizational Chart



January 2023



Michigan State University Fraternity and Sorority Life

January 2023